



# THE UKAPP CONFERENCE

## ACCESSIBILITY INFORMATION

Albert Hall, Nottingham, NG1 5AA

28th - 30th  
September  
2025  
[UKAPP.ORG.UK](http://UKAPP.ORG.UK)

The page features three large teal decorative circles: one in the top-left corner, a large one in the top-right corner, and one in the bottom-left corner.

# A note from the **UKAPP**

This year one of our main aims is to make conference as accessible as possible to everyone. With body piercing becoming a more accepted career choice that now means that people from all walks of life are able to join our community and we want to ensure that we are doing all we can to make this a possibility.

We have always strived to ensure that conference is a safe space and we encourage everyone to also please read our “Code of Conduct” and “Guide to Nottingham”

After moving to a new venue in 2024 we would like to ensure that any issues that may have been apparent are fixed to the best of our ability for the 2025 conference. Unfortunately given the age and nature of the venue there are some issues that we may not be able to address as sufficiently as we like.

Below we have included what we believe is some useful information for anyone who may have additional accessibility needs. There is also a map of the venue at the end of the document to ensure that all points are clear. We will be adding to this document periodically so please check back for new information.

**If you need any clarification or think you may require further assistance please do not hesitate to contact us.**

## **Entrance**

The main entrance to the foyer is located on North Circus Street. To access the foyer via this entrance there is a large staircase to descend, hand rails are available. The accessible entrance is on the opposite side of the venue, there is a small lay by at the junction between Maid Marian Way and Derby Road. Here there is a ramp to the door where a bell will need to be pressed and a member of staff will grant access. This will provide you with access to the Osborne Lounge. The Osborne Lounge will be being utilised as a classroom however all speakers will be informed that the accessible entrance is located in this room.

## **Classrooms**

The majority of the classrooms are located on the ground floor. One classroom is located on the first floor and this is accessible via lift (more information to follow), one classroom (the City Suite) is located on the second floor and is only accessible by several sets of stairs. In regards to this classroom as it may not be accessible to all we are aiming to only host classes here that will be held twice and will also be hosted in an accessible classroom.

## **The Vendor Floor**

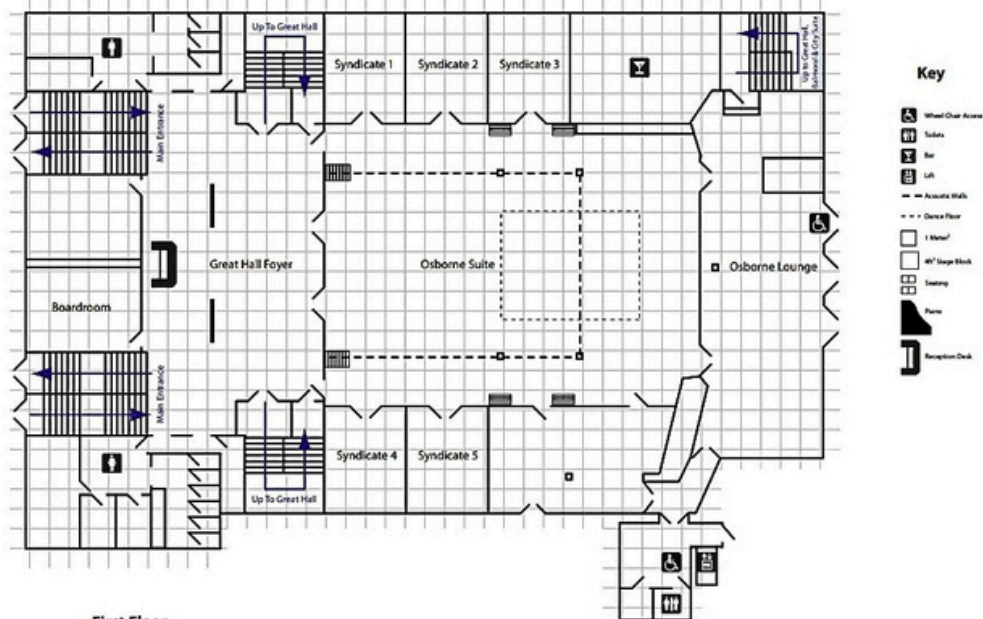
The vendor floor is located on the first floor (the Great Hall). The vendor floor is accessible either by using a staircase from the foyer or alternatively via a lift from the ground floor which will take you to the balcony of the Great Hall, a scissor lift is then available to take you to the stage area where a ramp is installed to take you to the main part of the vendor floor.

## **Lift & toilets**

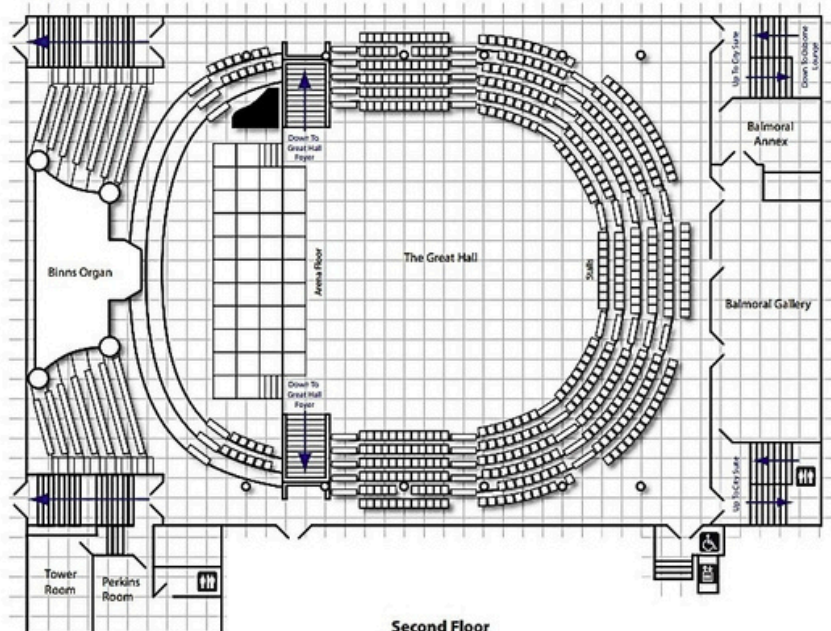
A lift for those with accessibility requirements and a toilet are both located towards the back of the venue on the ground floor. These are accessible at all times. Their locations can be viewed on the map to follow.

# Albert Hall Conference Centre Floor Plan

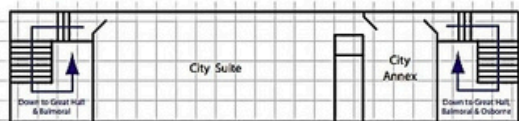
## Ground Floor



## First Floor



## Second Floor





**Join  
us**

[UKAPP.ORG.UK](http://UKAPP.ORG.UK)

## Our **Contact Info**

[President@safepiercing.co.uk](mailto:President@safepiercing.co.uk)

[Secretary@safepiercing.co.uk](mailto:Secretary@safepiercing.co.uk)

[Health@safepiercing.co.uk](mailto:Health@safepiercing.co.uk)

[Liaison@safepiercing.co.uk](mailto:Liaison@safepiercing.co.uk)

[Membership@safepiercing.co.uk](mailto:Membership@safepiercing.co.uk)

[Vicepresident@safepiercing.co.uk](mailto:Vicepresident@safepiercing.co.uk)